

Moticam 1080 HDMI & USB

FULL HD CAMERAS

The Full HD affordable multi-tasking microscopy camera. The Moticam 1080 is dedicated to documentation of microscopic results with a clear focus on maximum colour fidelity and fast live image.

It does not require a computer for standard operation, as it comes with an on-board software that will allow you to use it by simply connecting it to a screen through its HDMI port, and with a mouse connected to the USB port of the camera.

www.moticamseries.com | www.moticeurope.com

FULL HD STANDALONE CAMERA





Moticam 1080 TECHNICAL SPECIFICATIONS

Sensor Type	CMOS
Sensor Size	1/2.8"
Resolution	8.0 MP
Capture format (on SD-card)	Still Image 3840 x 2160 (8.0MP) / Video Full HD 1920 x 1080
Live Display Mode (through USB)	1920 x 1080 (Full HD) @ 30 fps*
Live Display Mode (through HDMI)	1920 x 1080 (Full HD) @ 60 fps*
Pixel Size	2.8µm x 2.8µm
Data Transfer	HDMI (1080p) and USB2.0
Slot	SD Card (max 32Gb)
Supported OS	Microsoft Windows XP SP3/Vista/7/8/10 and MAC OSX & Linux
Minimum Computer Requirements	2GHz dualcore – RAM memory 2GB – Video memory min. 512 MB
Lens Mount	C-Mount
On-board software (Camera connected through HDMI to a HD screen and through USB to a mouse)	Standard tools Still image capture, Live image record, Zoom in & out, Magnifier, ROI, Mirror, Rotation, Split, Freeze, Cross line, Gallery.
	Image adjustments (AE/AWB) Auto/Manual Exposure mode, Gain, Target Brightness setting, Light Frequency, Auto/Manual White Balance mode.
	Advanced settings Saturation, Contrast, Gamma, Sharpness, Denoise, User settings, System's Time setting, Language (English, Chinese and Japanese), Format SD card.
Package Includes	CS Ring Adaptor, HDMI cable, Focusable Lens, 30mm and 38mm Eyepiece Adapters, USB 2.0 Cable, Calibration Slide, Macro Tube, Motic Images Plus 3.0 for PC/OSX/Linux

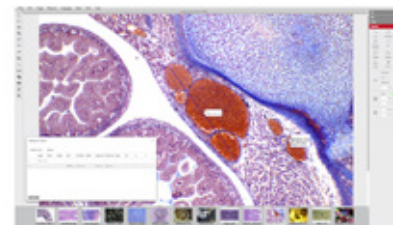
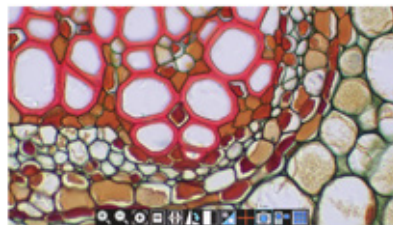
**frames per second
under optimal illumination conditions*

ON-BOARD SOFTWARE & MOTIC IMAGES PLUS 3.0 SOFTWARE

THE **[AllinOneBOX]** CONCEPT Everything that you may need to work with your Moticam is included in one box

On-board software

The Moticam 1080 has its own built-in software, making it possible to view live images, make image adjustments or edit them. You can also capture images or record videos directly from a screen with the help of a mouse, storing them in an SD card.



Motic Images Plus 3.0

By connecting your Moticam to your computer you will be able to work with our well-known software, that comes included in the package. View, capture, edit, measure, make reports... all its standard features and the new ones packed in a new user-friendly interface.